

HOW DO I SET UP AN FSERVER?

```
-> [Haywire] YOU have made me addicted to toons. Gimme more!  
-Haywire- Sorry You have made me addicted to toons. Gimme more! is a voice restricted trigger. --SysReset  
2.53--
```

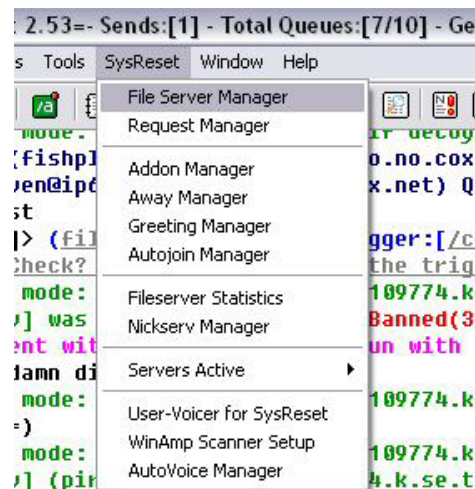
Are you trying to expand your cartoon collection, but keep coming across messages like the one above? Voice-Restricted triggers are those that only voiced users (i.e. those with a +, % or @ symbol next to their nicknames in the right-hand menu) can access. These servers generally contain the best stuff, and the owners imply this regulation to ensure that their stuff gets circulated as fast as possible (by only giving it to those who will share it with others). So, “*How Do I Get Voiced?*” I hear you cry! Well, you need to set-up something called an FSERVE (short for File Server). In order to run an fserve, you need a special piece of software. There are loads of different programs that will enable you to share your files with others, such as Polaris, Invision, Excursion and UPP. However, the most commonly used software is SysReset – and it is Sysreset that this guide will cover.

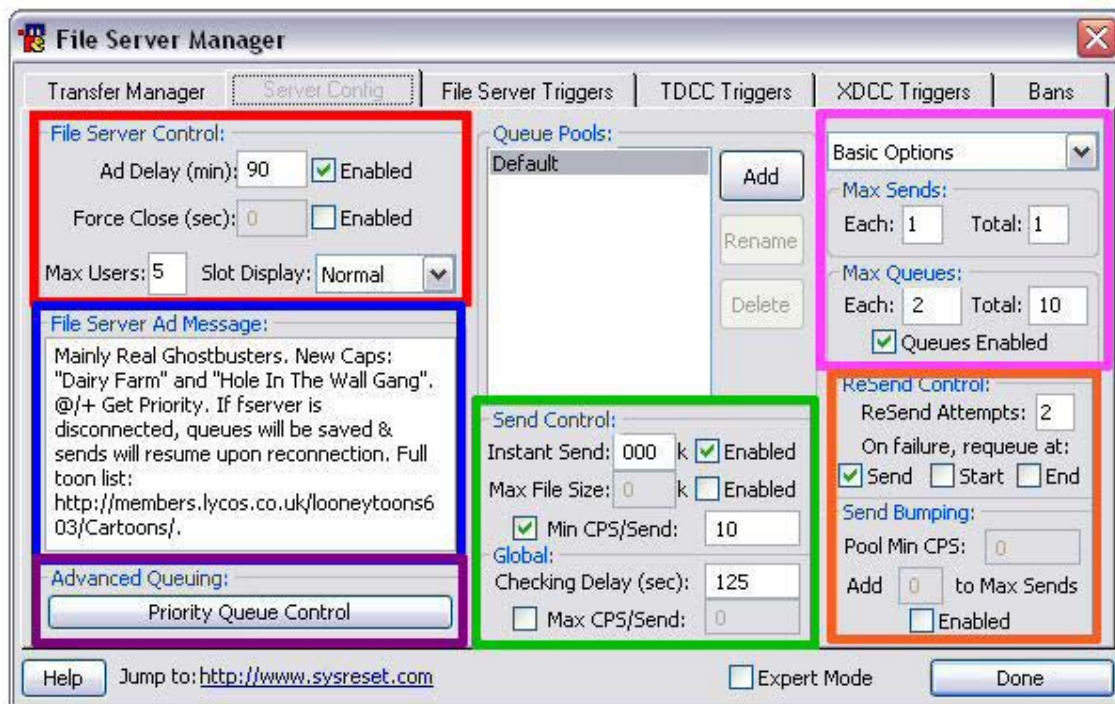
First Thing’s First

You need to download Sysreset 2.53 from: <http://www.sysreset.com/> Once downloaded, install it, and run the program (double-click the mirc.exe file in the C:\Sysreset folder) and configure as you did your standard mIRC program (i.e. enter the user details, nick, preferences etc.). Now, create a folder on your hard disk and put some cartoons in it. In 80s-cartoons on DejaToons they have a minimum of 10 cartoon episodes that you need to have on your server. However, they do make an exception for new servers. Anyway, create the folder, and put some stuff (pref. Cartoons) in it. Once you’ve done that, go back to Sysreset.

Setting Up Sysreset to Serve

In Sysreset, click SYSRESET > FILE SERVER MANAGER. You should be confronted by a box containing 6 tabs. Click the second tab along, that states **Server Config**. You should see the box below.





File Server Control (Red): Set Ad Delay to 90, and tick Enabled. Remove the tick from Force Close. Set Max Users to 5 and Slots Display to Normal.

File Server Ad Message (Blue): In this box, type a description of the stuff on your fserver. If you're new to all this, I would suggest you mention that you're new and so there aren't many cartoons online yet but that you'll add them as you get them.

Send Control (Green): Set Instant Send to 1000 (this means that anything that someone requests that is 1mb or less in size will send immediately, rather than being queued). Remove the tick from Max File Size. Set Min CPS/Send to 10 (this means the send will terminate if it drops below 10kbps, thereby stopping someone on a slow connection holding up your fserver). Set Checking Delay to 125 and remove any tick from the Max CPS/Send box.

Send Configuration (Pink): This bit depends on your connection speed. Personally, I'm on ADSL and so although I have a 110k download speed, I only have a paltry 28k upload. Considering that most cartoons around these days are at least 200mb each, it already takes just over two hours to send one show at 28k and so I only have 1 send. If I had 2 sends, each user would get the file at about 14kbps each (meaning it would take each user nearly 4 hours to get a single cartoon). If, however, you have a super-fast connection that lets you upload at 900k, you could afford to have some 20 sends. In the setup above, each person is allowed 1 send at a time, and there is only ever a single send going at any one time. My queues are set at 2 (each) and 10 (total), so each user can only queue 2 episodes, and I have 10 queue slots available in all. Again, change this as you see fit, but beware that if you don't specify a value for *Each*, then someone could go

on your server, queue up 10 episodes and then nobody else would get a look in. Tick Queues Enabled.

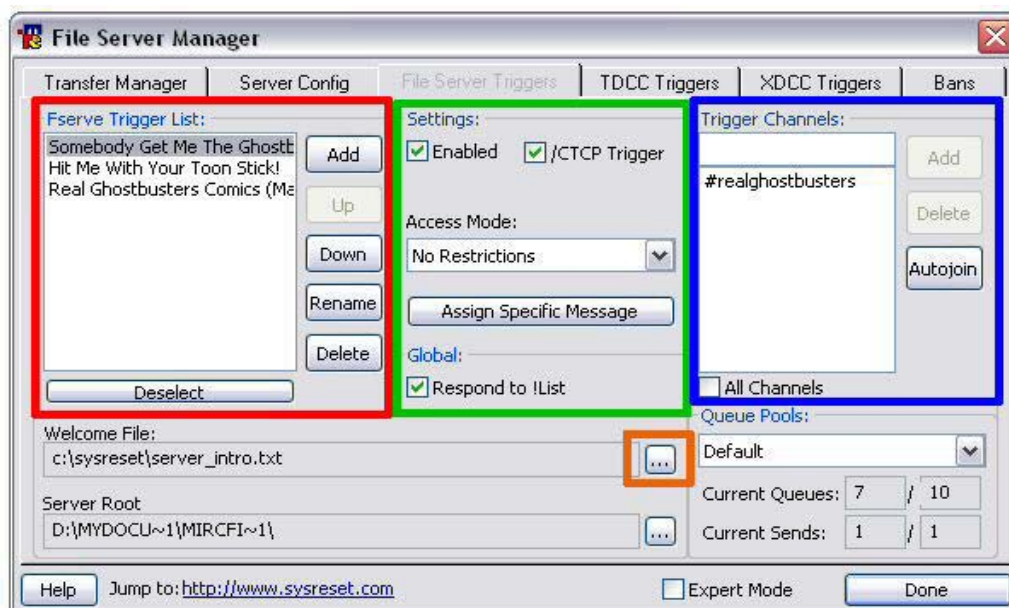
Resend Controls (Orange): Set Resend Attempts at whatever you want (I have 2, which means my server will try twice to re-establish the send if the user gets cut-off). Tick Send and remove any tick from the Enabled box of Send Bumping.



Advanced Queuing (Purple): Click the Priority Queue Control button and you'll be confronted with the box on the left. This sets up which users (if any) you want to give priority to. Generally, most people set their servers to give voiced and op users priority over leeches. This means that if there are, say, 2 queues already setup in slots 1 & 2 by a leech and you're voiced, any episodes you queue will go straight to the top, kicking the leecher's queues down the list. However, as a voiced user you cannot queue-jump other voiced users. In some instances, ops can queue jump voiced users, but this depends on the individual server configuration. If you want to give your fellow servers priority, tick the bottom two boxes. Leave the first one blank.

Configuring Triggers

A Trigger, as I'm sure you're aware, is a line of text that a person needs to type to access your server. Click the FILE SERVER TRIGGERS tab, and you should see this:



Fserve Trigger List (Red): This is where your trigger(s) will appear. To setup a new trigger, click ADD and you'll go through the process below. Type the text you'd like to use as a trigger (e.g. *"Toons, Toons & More Toons"* in the example below and click OK. You'll now be confronted with the second box, asking you to select a welcome file – in the Sysreset folder, select readme.txt or click CANCEL. Finally, you'll be asked to select a Root Folder – navigate the to folder where your cartoons are stored and click OK. If you need to change any of these files or locations, you can do so by clicking on your trigger and then clicking the "..." box next to the chosen path (**Orange** box).



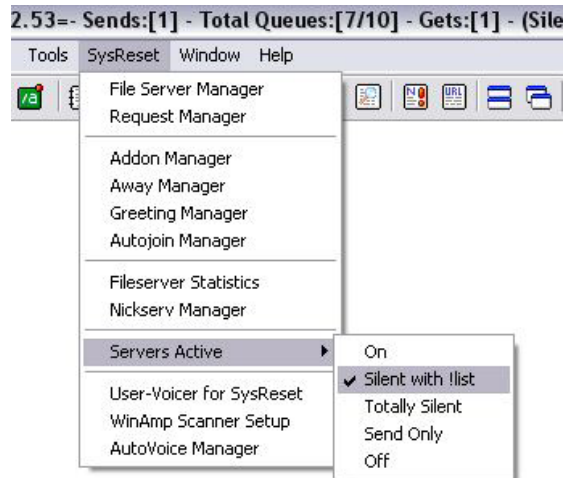
Trigger Settings (Green): Click on your trigger once to highlight it and then tick the Enabled, /CTCP Trigger and Respond to !list boxes.

Trigger Channels (Blue): Here you can specify which channels you want your triggers to appear in. If you're just gonna have one universal trigger, tick the All Channels box and leave it at that. If you've created several triggers and want each one to be for a specific channel, click on the trigger and then type the channel you want it to be active in (after removing the tick from the All Channels box) and click ADD.

The final thing you can do now is restricting your server if you wish. If you only wanted other servers to access your stuff, excluding the leeches. If you decide to do this, click on the trigger to highlight it and then change the option in the Access Mode box. Once you've set-up all your triggers, we're done with this box – click DONE.



Activating the File Server

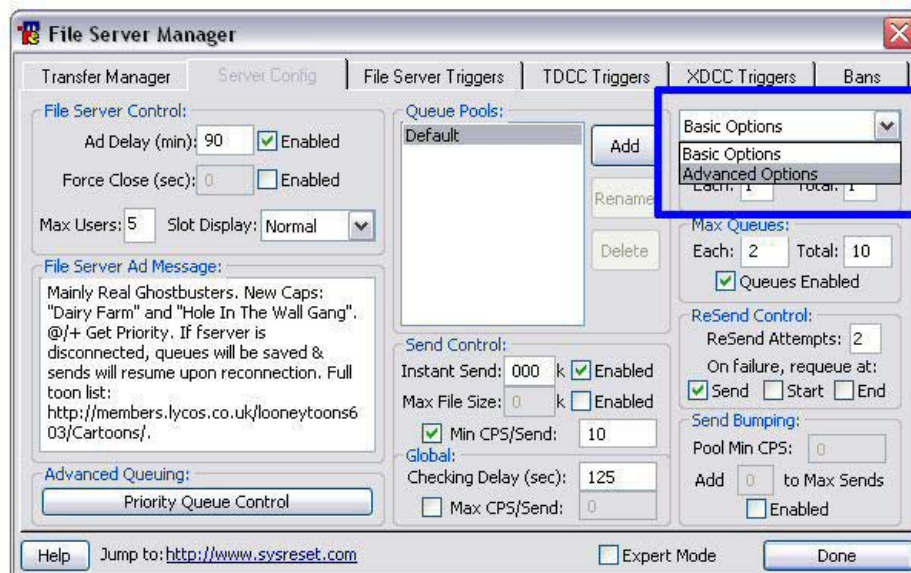


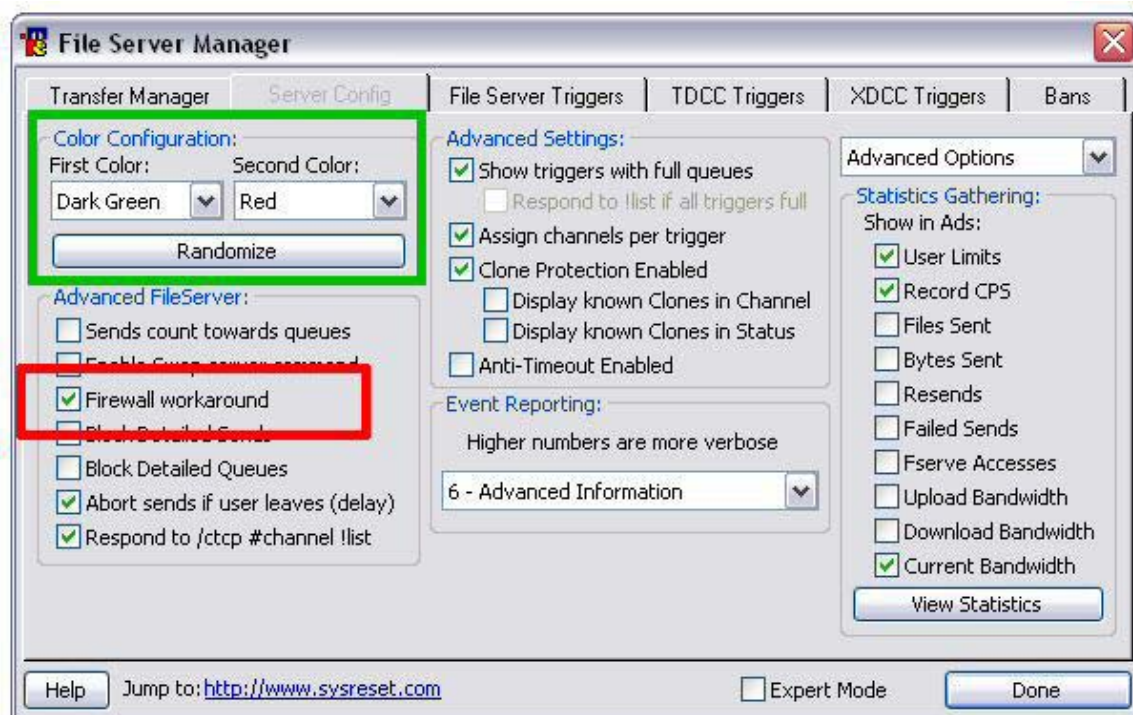
Now you've configured Sysreset to share your cartoons, you need to activate it. To do this, you need to click SYSRESET > SERVERS ACTIVE > SILENT WITH !LIST. It is very important that it is set to **Silent With !List**, because otherwise your fserver will advertise itself every 90 minutes, and each time it does you'll get kicked from #80s-cartoons!.

All being well, you should now find yourself with a full functional file server. The only exception may be if you're behind a firewall (either software or router). If you are behind a firewall don't worry, there are ways around it.

Negotiating A Firewall

If you want to serve, but you're behind a firewall the last resort is to turn it off. Software firewalls are the easiest to negotiate, because you just tell the software to let Sysreset access the Internet. Routers are slightly more complicated. The most common way to use Sysreset from behind a router is to port switch. To do this, click SYSRESET > FILE SERVER MANAGER and select the SERVER CONFIG tab. Here change the **Basic Options** to **Advanced** in the drop-down menu box (Blue, below).





Now place a tick in the Firewall Workaround box (**Red**). On this panel you can also change the colours of your fserver message (**Green**). After ticking the box you should be confronted with a box asking you to enter a port.

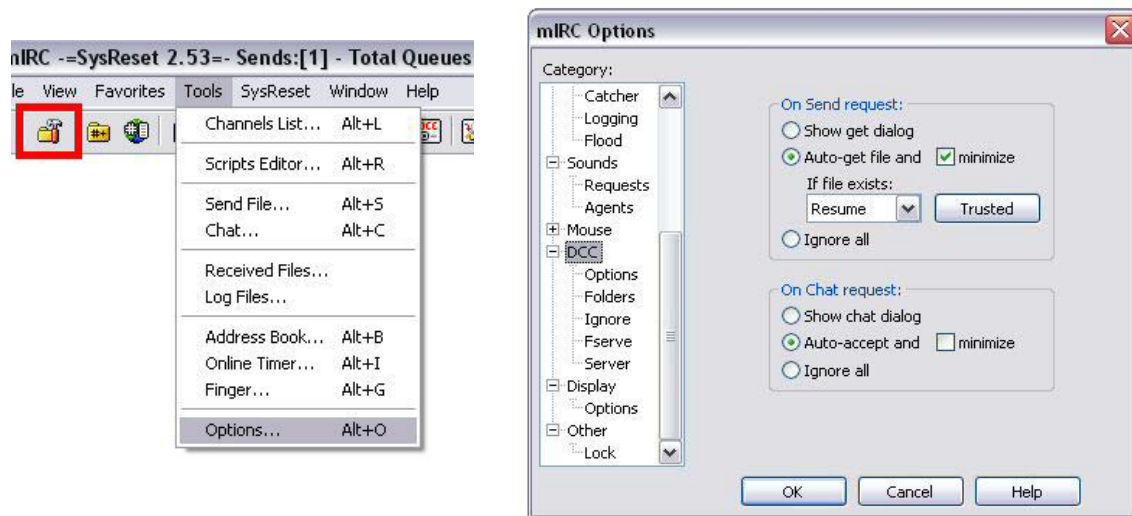


The most common ports are **6060** and **59**. Try 6060, and then set your router to listen on that port. People should now be able to access your fserver. If they're still having problems, ask in the channel for someone to help – there are loads of people in #80s-cartoons who use routers and there is bound to be someone who can help you out.

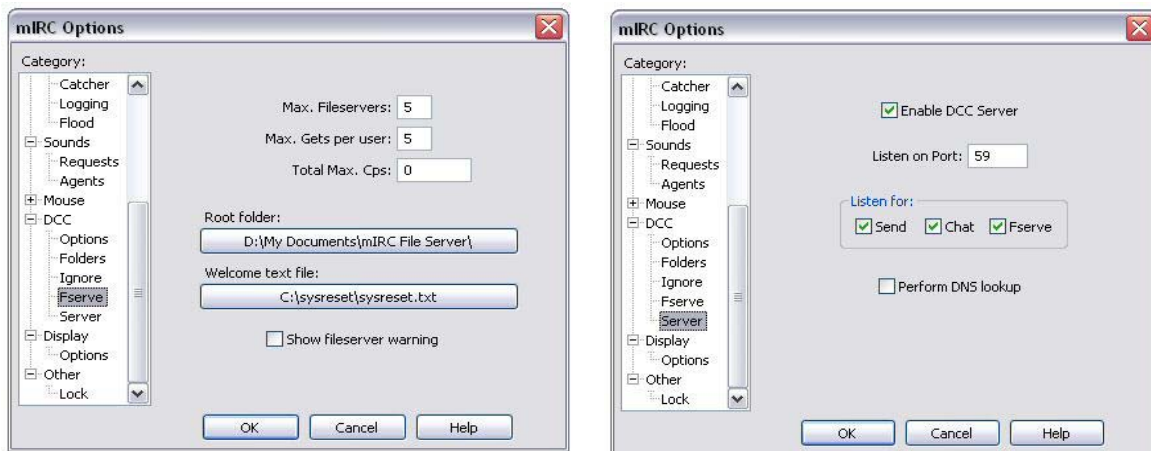
If You're Still Having Problems

Still not working? Well there is one more thing you can try before you decide to either throw in the towel, or ask for help in the channel. You can check your mIRC

configurations. Click TOOLS > OPTIONS or click on the Configuration button (highlighted in **Red** below)



Navigate to **DCC** in the left-hand pane and expand the menu by clicking on the + sign. Make sure that the DCC options are set to **Auto-Get File** (click OK to warning message), tick **Minimize** and select **Resume** from the If File Exists options. In the On Chat Request, select **Auto-accept**. Now move down the DCC list on the left, and click on **FSERVE**.



In the **FSERVE** window (above, left), set the top three boxes to 5, 5, 0 and make sure the Root Folder and Welcome Text are set to the same location as they are for Sysreset (click on the long box below each heading ("Root Folder:" or "Welcome Text:") to change the path. Now move down and click on **SERVER** (above, right). Make sure **Enable DCC Server** is checked, and set the **Listen On Port** to 59. Tick the **Send**, **Chat** and **Fserve** boxes – remove any tick from the **Perform DNS Lookup** box. Now click OK. Close and re-open Sysreset and you should be back up and running.

Assuming your server is now up-and-running smoothly, you can now go into #80s-cartoons, and get yourself voiced. In the main channel type: **!voiceme** and hit enter. All being well, you should see one of the ops voice you (i.e. set your nick to +v nickname) and you should now shoot up the nick list and be +nickname, rather than just nickname.

```
Connect .... [OFF]
> !voiceme
<kellyeta> !list mbaldw
<bowbiter> !list mbaldw
* kellyeta sets mode: +v mbaldw
> !list
```

Getting Onto The DejaToons Network & It's Channels

In the server window (far left on the bottom in Sysreset), type: **/server irc.dejatoons.net** and hit ENTER to connect to the DejaToons network. Once connected, be sure to check out the following channels:

#80s-cartoons
#realghostbusters
#Cartoons
#CartoonCartoons
#rewindtv
#Comic-Kingdom

Problems? Questions? Queries? Feel free to e-mail me at: sharkman49@hotmail.com Alternatively, fee free to PM me on mIRC (my nicks are: **mbaldw** (main) or **sharkman** (alternative)) – I can normally be found lurking in either **#realghostbusters** or **#80s-cartoons** (or both!).